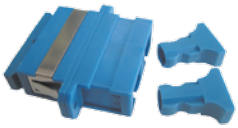


ADAPTERS



SC Singlemode Duplex Adapter



SC/APC Singlemode Simplex Adapter



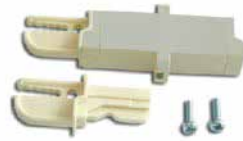
FC Singlemode Simplex Adapter



ST Singlemode Simplex Adapter



LC Singlemode Duplex Adapter



E2000 Multimode Simplex Adapter



SC Multimode Simplex Adapter



LC Singlemode Quad Adapter



MT-RJ Adapter



MTP™/MPO Adapter



SC-ST Multimode Duplex Adapter



FC-ST Singlemode Simplex Adapter

An optical fiber adapter or uniter is used to mate two connectors together, usually mounted in a distribution panel or wall box.

Fiber-Rex optical fiber adapters are precision made to ensure the perfect alignment of connectors, reducing insertion loss. In most cases the sleeves is the critical part of the system that aligns the ferrule parts of the connectors, keeping the fibers in perfect alignment.

Generally there are 2 types of alignment sleeve within an adapter, phosphor bronze for multimode or zirconia (ceramic) for singlemode.

In the case of the MT-RJ and MTP™/MPO the alignment is carried out by two guide pins fitted to one of the connectors. The adapter is purely to support and lock the connectors together in the distribution panel or wall box.

★ Features

- Complies with IEC 61754-25
- Available as FC, SC, ST, LC, MT-RJ and MTP™/MPO
- Available in simplex, duplex, quad (LC) and hybrid versions
- High precision zirconia or standard phosphor bronze sleeves
- Low insertion loss
- High repeatability and stability
- RoHS, REACH compliant

⚙️ Technical Specification

	Ceramic	Phosphor Bronze	Conformance
Insertion Loss (Typ)	0.1 dB	0.15 dB	IEC 61300-3-4
Mating Durability	500		IEC 61300-2-2
Receptacle Retention Force	1N - 2.5N		IEC 61754-20
Operating Temperature	-25 to +70, 12 cycles		IEC 61300-2-22

🛒 Ordering Information

AD				
	FC FC/APC SC SC/APC ST	LC MT-RJ MU E2000	SM=Singlemode MM=Multimode	SI=Simplex DU=Duplex

